



Exclusive UK partner **EXLAR**

# SUBSEA ELECTRIC ACTUATORS

Sector



## Supplying The Most Advanced Solutions

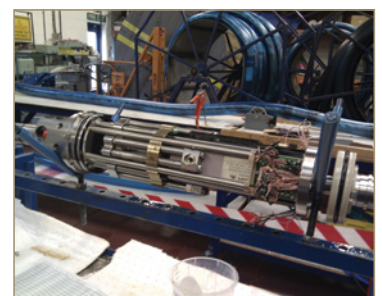
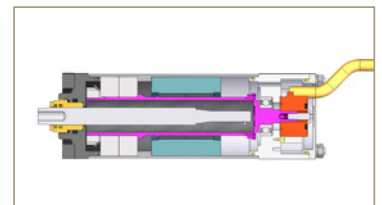
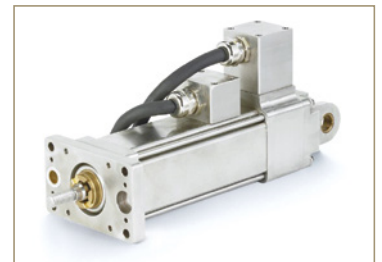
Building on continuous research and development completed since 2009 and in service applications on Virginia Class Nuclear Submarines with Exlar electric cylinders, Olsen has increased the opportunity and availability for commercially off the shelf (COTS) subsea solutions, both linear and rotary to 300Bar.

### ○ OLX Series Electric Linear Subsea Actuators

- 50, 60, 100 and 300 Bar available
- Force rating to 2.5kN up to 110kN
- Travel Length up to 450mm
- Flexible Speed Ratings
- Stainless 316L painted
- Pressure compensated
- Easy maintenance front seal assembly

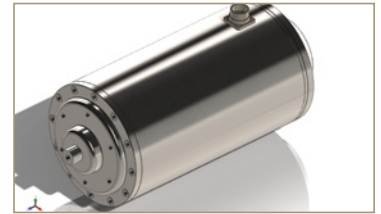
### ○ Flexible Tailored Applications Options

- Choice of housing materials including Monel
- Internal Anti-rotate & hard stops
- Back-drive with Fail Safe spring options
- 24/48Vdc, 230V AC 1ph, 230/400V 3ph
- Internal Limit Switch Assembly
- Can Bus connection
- Secondary redundant sealing system
- Salinity sensor
- Temperature sensor
- Pressure sensor level
- Manual docking side or rear drive
- Visual position indication
- Flexible mounting options
- Flexible main rod dimensions
- Marine Subsea rated cables
- Integrated Servo drive electronics



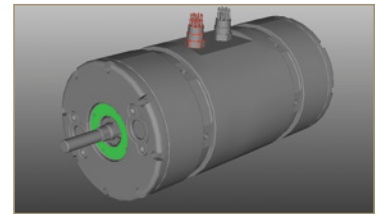
## ○ ORX Series Electric Rotary Subsea Actuators\_

- 50,60, 100 and 300 Bar available
- Torque Rating up to 40kNm
- Flexible Speed Ratings
- Stainless 316L painted
- Pressure compensated
- Easy maintenance front seal assembly



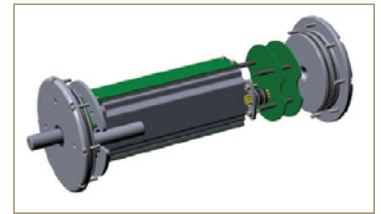
## ○ Flexible Tailored Applications Options\_

- Choice of housing materials including Monel
- Tooth brake parking fail safe option
- Fail safe spring options on low torque applications
- Zero backlash
- Integrated Servo drive electronics
- 24/48Vdc, 230V AC 1ph, 230/400V 3ph
- Can Bus connection
- Secondary redundant sealing system
- Salinity sensor, temperature sensor
- Pressure sensor level
- Manual docking side or rear drive
- Flexible mounting options
- Flexible main rod dimensions
- Marine Subsea rated cables



## ○ Optional Integrated Servo Drive Electronics\_

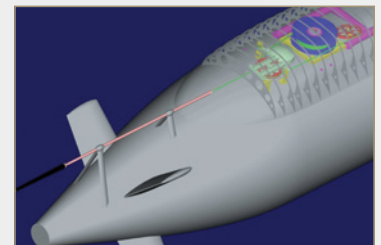
- Up to 4kW rated with a choice of supply voltages
- Nitrogen filled 1Bar sealed housing or oil filled
- Choice of fieldbus or fibre optic connection to 3km
- Multi-Axis Power Electronics Control Modules available



## Applications\_

- |                             |                             |
|-----------------------------|-----------------------------|
| ○ Winch Brake Control       | ○ Pipeline inspection tools |
| ○ Winch Cable guide control | ○ ROV Thruster              |
| ○ Umbilical Cutter          | ○ ROV manipulator           |
| ○ Sonar Array Cutter        | ○ Rudder Control            |
| ○ Sonar Mast Deployment     | ○ Pitch Control             |
| ○ Hatch Opening             | ○ Well Head On/Off Valves   |
| ○ Door Actuation Systems    | ○ Subsea Control Valves     |
| ○ Securing Mechanisms       |                             |

- ✓ Proven designs in the field
- ✓ Low power consumption
- ✓ Low maintenance and no oil leaks
- ✓ Accurate positioning and precise motion control



CONSULT OLSEN TODAY FOR THE COMPLETE LISTING OF SUBSEA ACTUATORS.

Innovative tailored pressure compensated solutions



+44 (0) 1925 202 127  
 info@olsenactuation.com  
 www.olsenactuation.com

**Olsen Subsea Controls Ltd**  
 The Innovation Centre  
 Sci-Tech Daresbury, Keckwick Lane  
 Daresbury, Cheshire, WA4 4FS

